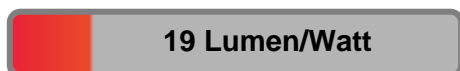


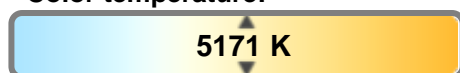
Light efficiency:



Light quality:



Color temperature:

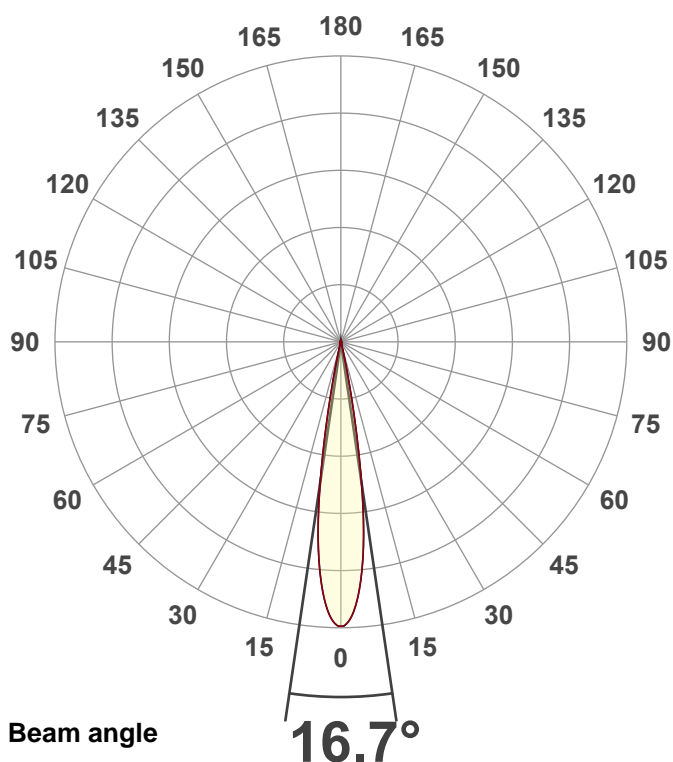


Output: 13238 lm
Peak: 119725 cd
Power: 709 W
PF: 1.0



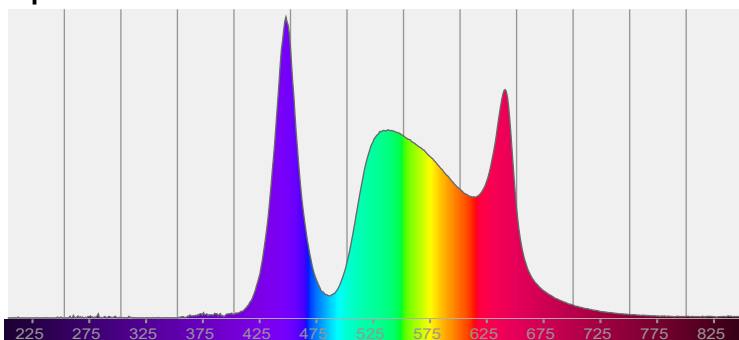
Product name:
Hydro Flex L19 (Zoom 50% 5600K)
Item number:

Date and time:
9/8/2025 8:29:57 AM

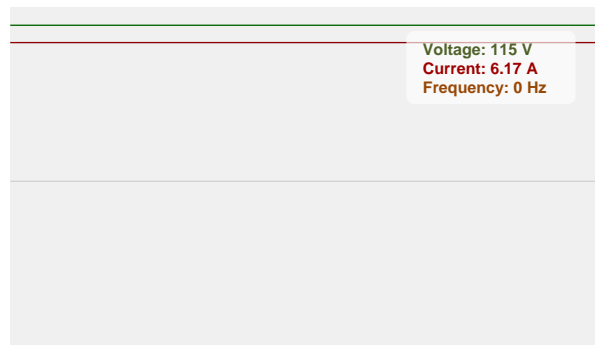


CIE 1931
x: 0.341
y: 0.352

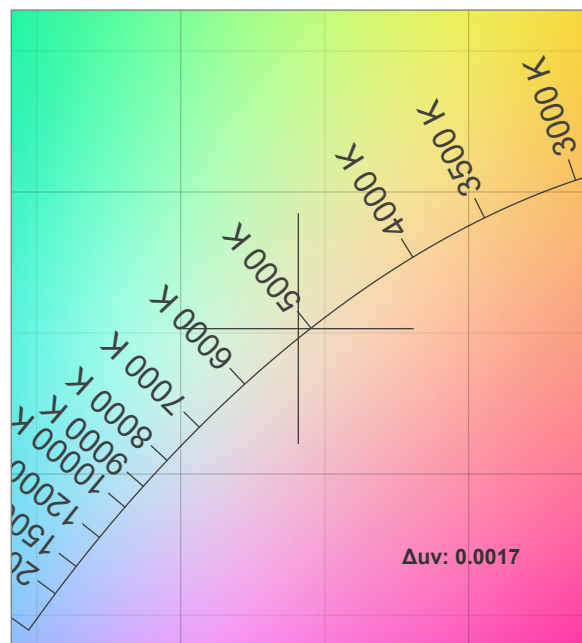
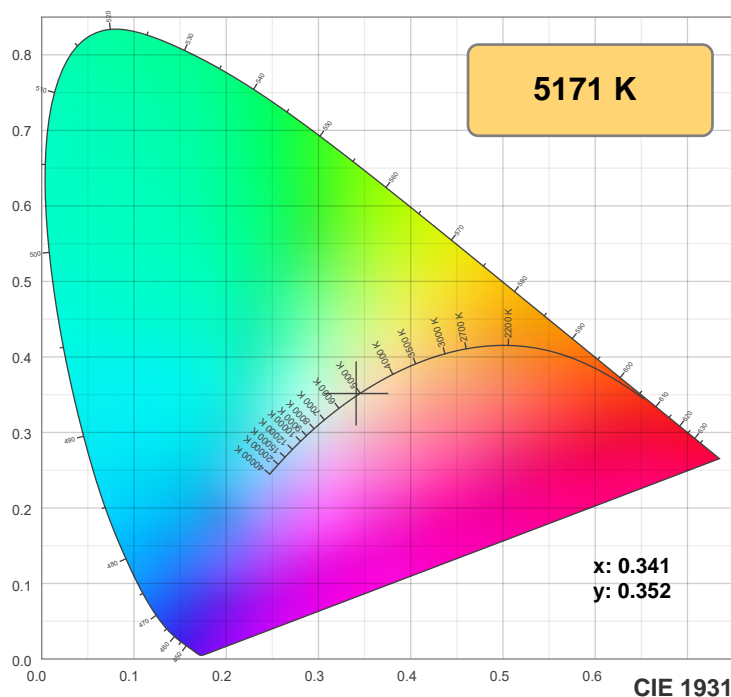
Spectra



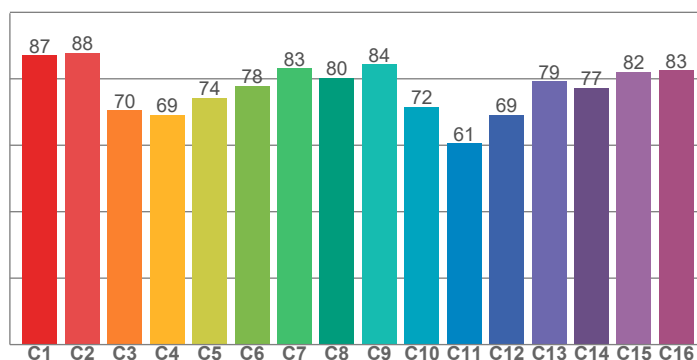
Power



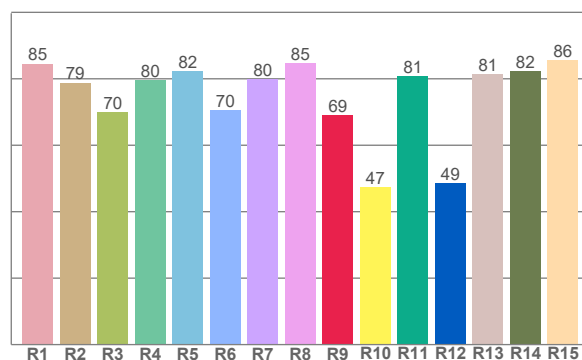
Color details



TM-30: 77.0



CRI: 78.8 (R1-R8)



CRI R values, only R1-R8 are used to calculate final CRI value

R1	R2	R3	R4	R5	R6	R7	R8	R9	R10	R11	R12	R13	R14	R15
84.5	78.8	69.8	79.6	82.3	70.5	79.8	84.6	69.1	47.4	80.7	48.6	81.4	82.3	85.6

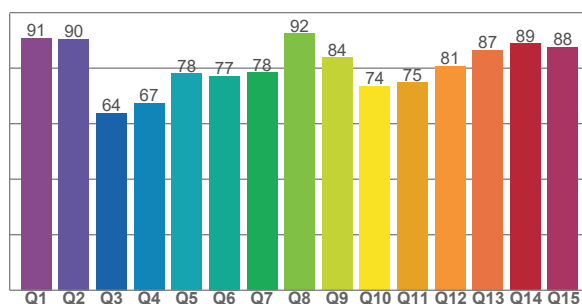
TM30 C values, 16 binned values out of total of 99 C values

C1	C2	C3	C4	C5	C6	C7	C8	C9	C10	C11	C12	C13	C14	C15	C16
87.1	87.8	70.4	69.2	74.3	77.9	83.1	80.3	84.4	71.5	60.5	69.1	79.3	77.3	82.1	82.6

CQS Q values

Q1	Q2	Q3	Q4	Q5	Q6	Q7	Q8	Q9	Q10	Q11	Q12	Q13	Q14	Q15
90.9	90.5	63.9	67.4	78.1	77.2	78.4	92.4	83.9	73.6	74.8	80.7	86.6	88.8	87.6

CQS: 79.2



Color parameters

Color temperature	Color rendering index	Red component	Color fidelity	Color gamut	Color quality scale	Color coordinate cie 1931	Color coordinate cie 1931	Color coordinate	Color coordinate	Color deviation from black body
CCT	CRI	CRI R9	TM30 Rf	TM30 Rg	CQS	x	y	u	v	Δuv
5171 K	78.8	69.1	77.0	104.3	79.2	0.341	0.352	0.209	0.323	0.0017

TM-30 details

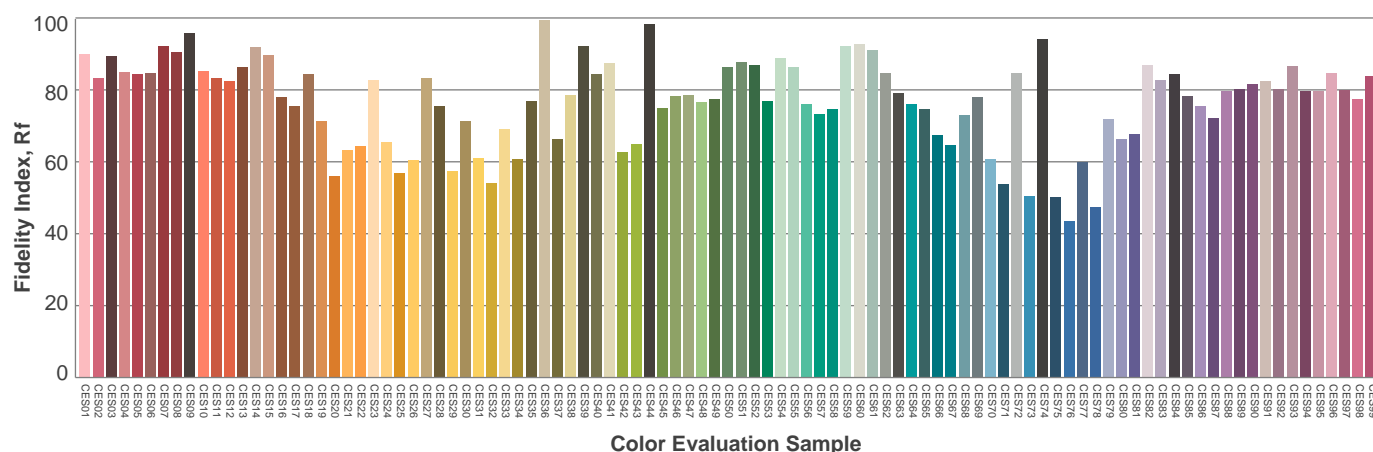
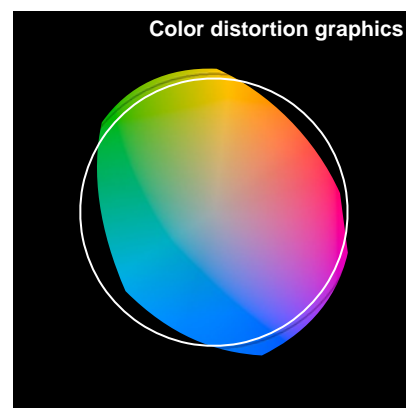
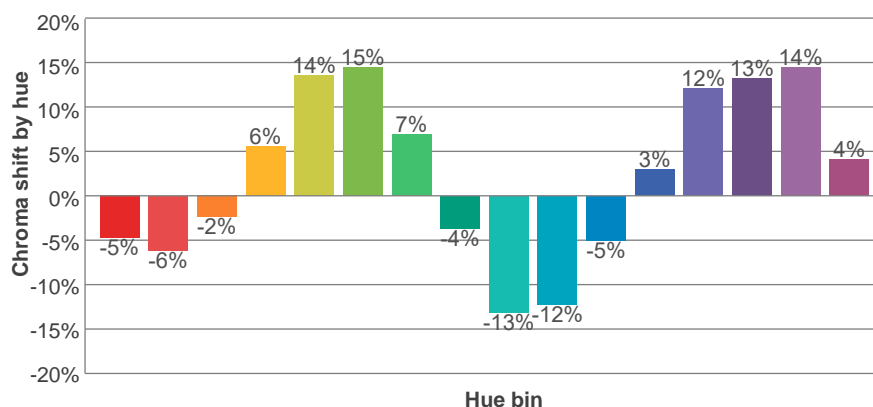
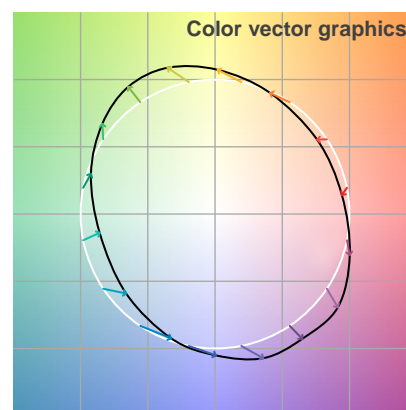
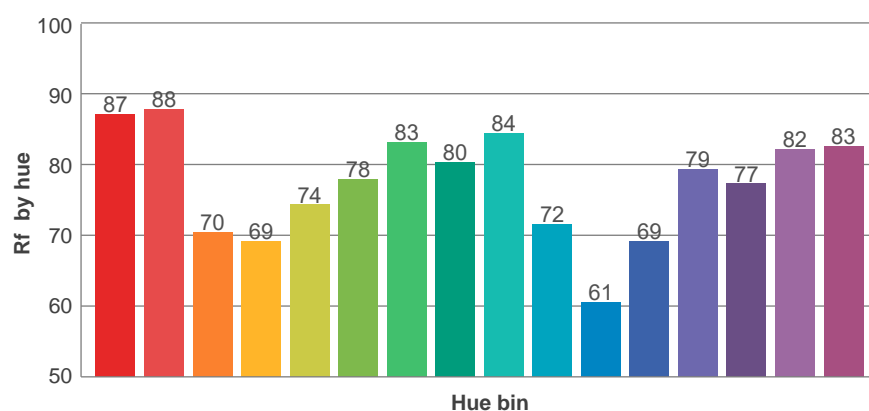
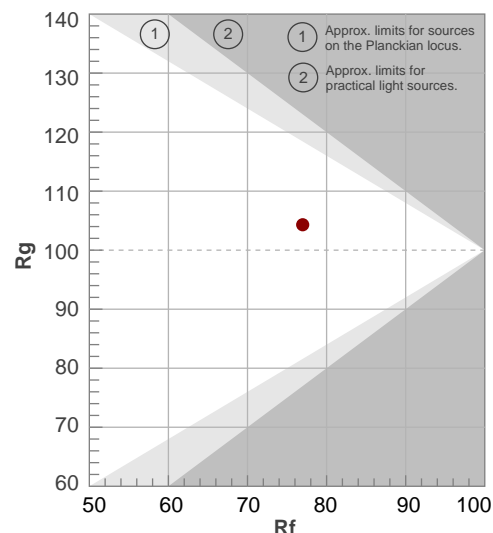
Rf 77.0

Fidelity index Rf

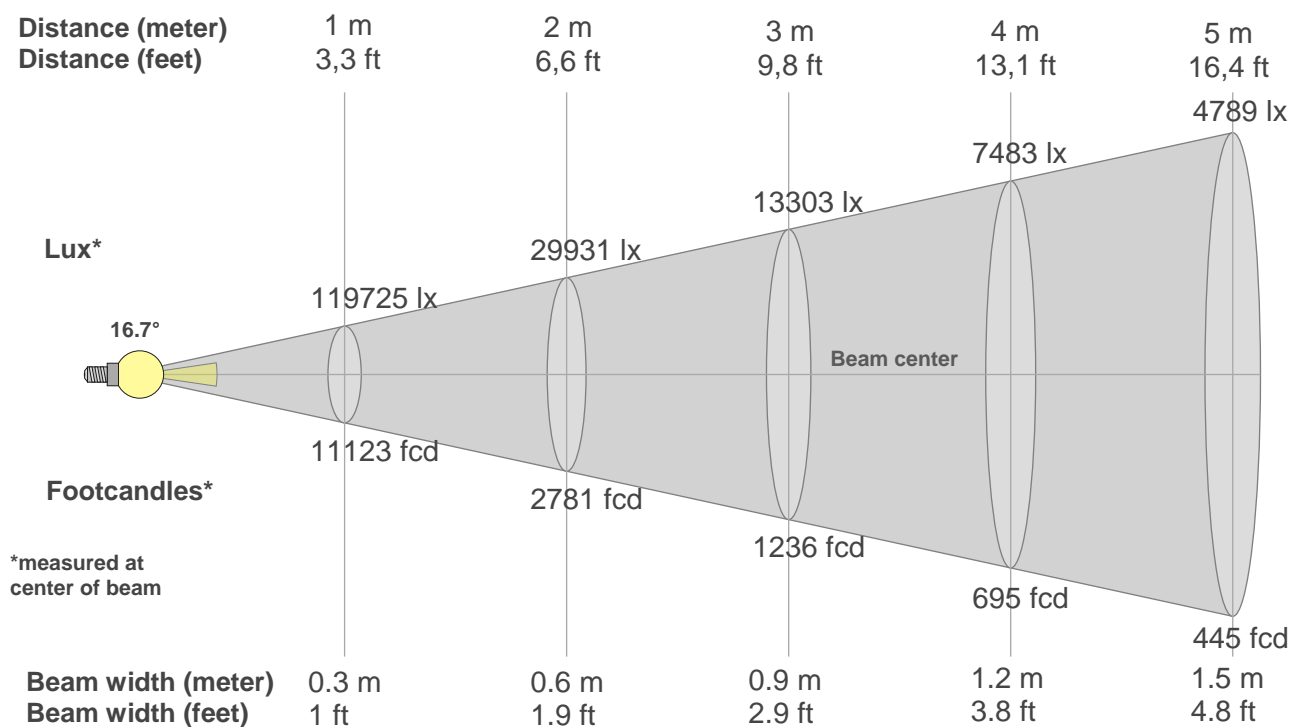
Rg 104.3

Gamut index Rg

Hue Bin	Ri	Shifts (%)	
		Chroma	Hue
1	87	-5%	-4%
2	88	-6%	4%
3	70	-2%	16%
4	69	6%	19%
5	74	14%	13%
6	78	15%	1%
7	83	7%	-9%
8	80	-4%	-11%
9	84	-13%	-3%
10	72	-12%	12%
11	61	-5%	24%
12	69	3%	21%
13	79	12%	14%
14	77	13%	2%
15	82	14%	-7%
16	83	4%	-10%



Beam details



Beam intensities from 1-20m

1m	2m	3m	4m	5m	6m	7m	8m	9m	10m	11m	12m	13m	14m	15m	16m	17m	18m	19m	20m
3.3ft	6.6ft	9.8ft	13.1ft	16.4ft	19.7ft	23ft	26.2ft	29.5ft	32.8ft	36.1ft	39.4ft	42.7ft	45.9ft	49.2ft	52.5ft	55.8ft	59.1ft	62.3ft	65.6ft
119725lx	29931lx	13303lx	7483lx	4789lx	3326lx	2443lx	1871lx	1478lx	1197lx	989lx	831lx	708lx	611lx	532lx	468lx	414lx	370lx	332lx	299lx
11122.8 fcd	2780.7 fcd	1235.9 fcd	695.2 fcd	444.9 fcd	309 fcd	227 fcd	173.8 fcd	137.3 fcd	111.2 fcd	91.9 fcd	77.2 fcd	65.8 fcd	56.7 fcd	49.4 fcd	43.4 fcd	38.5 fcd	34.3 fcd	30.8 fcd	27.8 fcd

Intensities in 0° c-plane

0°	1°	2°	3°	4°	5°	6°	7°	8°	9°	10°	11°	12°	13°	14°	15°	16°	17°	18°	19°
120k	119k	117k	112k	106k	99k	90k	78k	65k	50k	35k	22k	12k	5k	2k	1k	1k	1k	0k	0k
100%	99%	97%	94%	89%	83%	75%	66%	54%	42%	29%	18%	10%	5%	2%	1%	0%	0%	0%	0%

Intensities in 90° c-plane

0°	1°	2°	3°	4°	5°	6°	7°	8°	9°	10°	11°	12°	13°	14°	15°	16°	17°	18°	19°
120k	119k	117k	112k	106k	99k	90k	78k	65k	50k	35k	22k	12k	5k	2k	1k	1k	1k	0k	0k
100%	99%	97%	94%	89%	83%	75%	66%	54%	42%	29%	18%	10%	5%	2%	1%	0%	0%	0%	0%

Intensities in 180° c-plane

0°	1°	2°	3°	4°	5°	6°	7°	8°	9°	10°	11°	12°	13°	14°	15°	16°	17°	18°	19°
120k	119k	117k	112k	106k	99k	90k	78k	65k	50k	35k	22k	12k	5k	2k	1k	1k	1k	0k	0k
100%	99%	97%	94%	89%	83%	75%	66%	54%	42%	29%	18%	10%	5%	2%	1%	0%	0%	0%	0%

Intensities in 270° c-plane

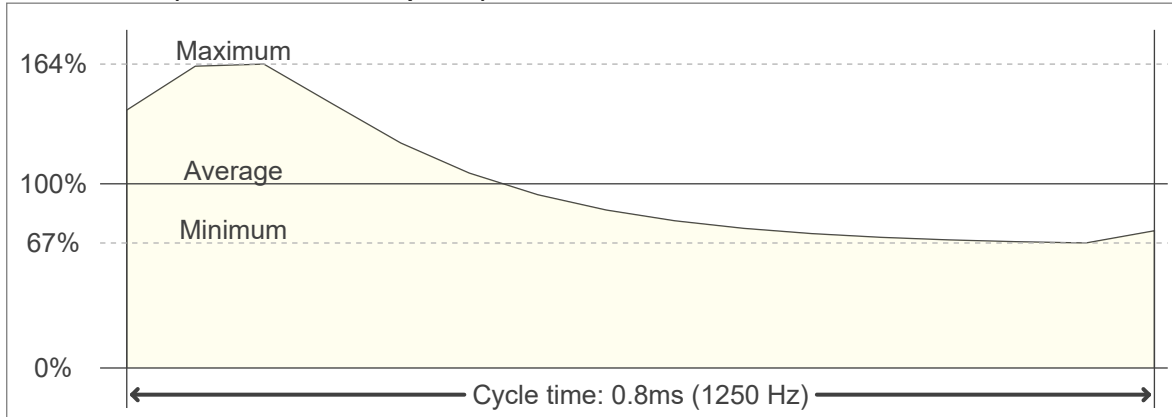
0°	1°	2°	3°	4°	5°	6°	7°	8°	9°	10°	11°	12°	13°	14°	15°	16°	17°	18°	19°
120k	119k	117k	112k	106k	99k	90k	78k	65k	50k	35k	22k	12k	5k	2k	1k	1k	1k	0k	0k
100%	99%	97%	94%	89%	83%	75%	66%	54%	42%	29%	18%	10%	5%	2%	1%	0%	0%	0%	0%

Beam angle 50%	Field angle 10%	Cutoff angle 2,5%	Intensity ratio in 120° cone	Intensity ratio in 90° cone
16.7°	23.9°	27.4°	74.9%	70.8%

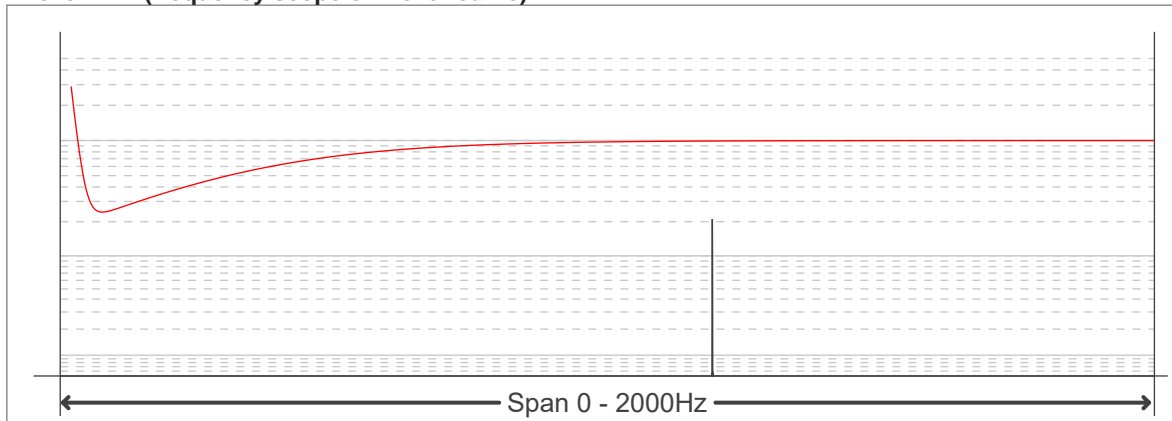
Flicker curve (complete sampled flicker signal)



Flicker frame (frame of one flicker period)



Flicker FFT (frequency scope of flicker curve)



Flicker results:

Flicker frequency:		1250 Hz	
Flicker index:	0.15	JA8/10 40Hz	0.27 %
Flicker percentage:	43.67 %	JA8/10 90Hz	0.59 %
SVM: (Visual flicker)	0.43	JA8/10 200Hz	1.3 %
PstLM	0	JA8/10 400Hz	2.54 %
Mp	0.08	JA8/10 1000Hz	7.48 %

Flicker conditions:

Sample rate:	20000 samples/second
--------------	----------------------